

## LEAVES FROM THE RECTOR'S DIARY

**December 2** We missed an Advent Carol Service this year because last evening the church at Publow was full for a Concert given by a Norwegian Choir. It was a stunning evening.

**December 9** *For a change today we held a Silver Tree Service in St Leonard's. A good congregation attended and we collected a very large number of wrapped Christmas gifts to be distributed amongst the elderly people in the Chew Valley area. (I have received from Independent Living Service at Curo, who distributed the presents on our behalf, many expressions of appreciation from the recipients all speaking of the joy brought to them in the knowledge that we had thought of them.)*

**December 13** Christmas has begun. Carols are already beginning to come out of my ears. Tonight we hosted the North Somerset Agricultural Society Carol Service at Publow church.

**December 15** *Off to see Father Christmas at Longleat. How much longer the grandchildren will continue to believe, I can't say. They will probably keep up the pretence as long as possible. Today's Father C. was clearly not the "real" one; they spotted his brown hair under his white beard. I wish that those who acted on behalf of Father C. took a bit more bother with their make-up. Children are very observant.*

**December 25** It has been an extremely busy ten days. Carol Services, Christmas Dinners, Funerals and a wedding. The attendances at all the services have been very large. I think we will put up a notice in August next year: "Come to Church Early and Miss the Christmas Rush!" Seriously, it's good that people still care about the traditional celebration of our Saviour's birth. The choir has worked hard, and gave an excellent input into our worship. I left Revd Sue to take the Christmas Communion at Chelwood whilst I was at Stowey. She was quite amazed at the large congregation there, and I was glad to be back at Compton Dando for our Christmas Celebration in St Mary's. Again, I was delighted that so many came; it had a real family atmosphere; plenty of joy and laughter as well as a reflective receiving of Communion.

**December 26** *I have gone back to wearing a scarf – the warm sort, not the ecclesiastical garment. It was one of my Christmas gifts – a St Paul's College, Cheltenham scarf. The shop in Cheltenham, "The Famous", has closed after 175 years' trading, and I wandered into the shop a few weeks ago. I told the manager that I wanted a scarf because I am proud of St Paul's and grateful for all that they gave to me over 50 years ago. I was trained as a Teacher there. I suggested to him that I would drop the hint to Carol that I wanted a scarf and if she should come in, then he was to direct her to the scarves. I left a description, and went off to do shopping in The Prom. When Carol and I met up for lunch, she had independently gone to "The Famous" to buy a scarf, and had been accosted immediately by The Manager. She was mystified, but thankfully, generous. I now have my college scarf and tie. Is it that great minds think alike, or do we have some mystical link? Coincidences happen between us so many times.*

**January 8** We have decided to put our house in Norwich on the market, thus beginning a few months of anxious waiting. They say that moving house is like facing a bereavement, and I believe that to be true. You are leaving behind something that has been very much a part of your past. The exciting thing is that once sold, we have no idea where we might end up one day, but that's well into the future. Went to Evensong in Norwich Cathedral, where, as usual, the Dean and Chapter were very welcoming.

**January 13** *The Baptism of Jesus, and preached about my memory of seeing so much rubbish in the River Jordan, rather like the amount of debris which has accumulated in the River Chew by the bridge by Publow church. Why are we so filthy? Have you seen the toilet pans and rubbish dumped in Old Road? But Jesus was baptised into the mess we have made of our lives. He came not to a neat and tidy world; He came to share our life. And at his baptism Jesus made that mess his.*

**January 14** I've had enough: CD's at weddings and funerals. They rarely work well. I try to tell brides that in my experience they don't really create the right atmosphere for entries and exits. Likewise at funerals. Use a CD by all means in the course of the service where it can be incorporated into the worship. They tell me that the Crem. at Haycombe is going to offer the facility of canned music for the hymns. Ugh! I know from experience that it doesn't work. Karaoke weddings and funerals are out. Live music is so much better.

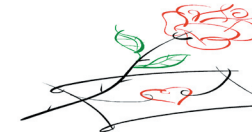
## Local History Group

For our January meeting Pensford Local History Group welcomed Robin Thornes from Quarry Faces, which is a project recording the history of quarrying on the Mendips. Robin gave an informative, engaging talk explaining things about this industry, from the geology, through the industrial development, to the social history told by the quarry workers themselves. There is an exhibition at Wells Museum about Quarry Faces and the local quarrying industry.

Our speaker for February is Dr Stefan Cembrowicz, a member of the Bristol car owners club, who will be talking about the Bristol car and it's history. Another member may drive his own Bristol car for people to enjoy afterwards. Please note the change of venue: we will meet in the Pavilion Room at the Memorial Hall in Publow Lane, at 7.30, Monday 4th February. £2.50 for non-members. All welcome

**Pensford Memorial Hall  
Management Committee AGM  
Wednesday 6th March  
7.30 pm**

All welcome, particularly anyone who has an interest in ensuring the Hall's future, and would like to become a committee member or a volunteer. Voluntary help is always required for tasks such as general maintenance and decorating, tidying of the playing field etc. Committee meetings are held every two months.



## Japónica Flowers

Japónica the Flower shop at the secret garden centre has been steadily building a regular customer base since opening last April, and after an extremely busy christmas making handmade wreaths and table decorations has a new location. It is now in the main garden centre in

## VISTS TO CHEW STOKE

### DOCTORS SURGERY

Keynsham dial-a-ride run a service to the surgery every Tuesday. The bus picks up in the Pensford area from 9.45am. For a 10.15 to 10.45am appointments. There is no need to make an appointment with the surgery, just ring Keynsham dial-a-ride 01225 395321 24 hours before and book a seat, also tell them if you want to see a doctor or a nurse. They will contact the surgery and advise them you will be coming. Few people are using the service and it needs to be fully used or it will become unviable and is likely to be withdrawn. Ken Webb. Village Agent West of England Rural Network

**Tel: 07919006708/01275 333700**

### Silver Tree Service at Chelwood

On the second Sunday in Advent a special Silver Tree Service was held at St Leonards where members of the community were invited to bring gift-wrapped presents suitable for an elderly person. These presents were distributed just before Christmas by staff from CURO's Independent Living Service to those in our area for whom they provide care. Many of the recipients live alone and would receive few, if any, visitors over the festive period. We were truly overwhelmed by the response and would like to express our sincere thanks to everyone who supported the Silver Tree Initiative. Ann Sherborne & Don Weston Churchwardens, St Leonards

### From the Parish Registers of St Leonards Chelwood

#### Thanksgiving Service

23rd Nov Matthew HOWLAND  
11th Jan Marjorie HARRISON

### From the Parish Registers of St Mary's Compton Dando

#### Holy Matrimony

8th Dec Paul Anthony HURREN and Madison Odette BESSELL

#### Funeral

13th Dec Robert EKE

### From the Parish Registers of All Saints' Publow

#### Service of Thanksgiving

21st Dec Malcolm LONEY  
14th Jan Kenneth James PRIMROSE

## All Saints' December Market Report

At the December Market a magnificent £484 was raised to support the General Fund at All Saints'. Grateful thanks are given to everyone – those who baked, cooked, knitted and sewed; those who manned stalls and all the people who came and bought home baking, crafts and plants.

There was a fantastic atmosphere and not much space to move around, but it was a good start to the Christmas festivities.

We look forward to seeing everyone again on 2nd February, when the new season marmalade will be available.

Ivy Thompson would like to thank everyone for remembering her on her birthday and also the kind wishes and cards received at Christmas.

Best wishes to you all for a happy and healthy 2013.



Contributions for this very worthwhile cause were much greater this year. Thank you to everyone for the many donations of clothes, goodies and cash which were taken to Caring at Christmas in time for the festive season. In addition the cash collection from the Midnight service, amounting to £244, has been forwarded. Again many thanks.

*Ann and Richard Hunt*

## Grants for Young People

The Compton Dando Church Estate Trust is a registered charity which for over 400 years has helped to maintain St Mary's church building, as well as providing some funds for schooling and those in need in the parish of St. Mary's. It is managed by local Trustees, called the Feoffees.

The Feoffees have decided to offer grants each year for young people who have a home address within the parish, are aged 16 years or over and who are engaged in further or higher education, apprenticeships or other formal training schemes. These grants are intended to help meet expenses which support the

study or training being undertaken, such as extra equipment, travel, books etc. The amount of the grant will depend on the number of applicants and the merit of the application, but may typically be around £100. Applications will close 23rd March 2013 and grants will be notified by the end of that month.

To apply for a grant, please write a letter to the Feoffees explaining how a grant would help your study or training, and address it to:-

David Brunskill. Steward to the Trustees. High Morrow. Bathford Hill. Compton Dando BS39 4LD or ring 01761 490449 for further information.



Every year at this particular time, I am once again tempted to believe that hibernation is the only real option to deal with the cold, dark days of winter.

This has undoubtedly been exacerbated this year by my own association with a particularly nasty virus which left me feeling like a toy racing car without its batteries! Although the days are beginning to get a little longer I still feel trapped in the depths of winter.

And then I looked out of my study window at the Palace and saw the return of the kingfisher. During all the work that was happening at the Palace last year, the kingfisher had decided to move house and I missed the flash of azure blue which was guaranteed to lift me out of whatever 'blues' I might have been experiencing. Suddenly the onset of spring did not feel so far away.

And I remembered what Gonville Ffrench Beytagh (former Dean of Capetown) used to say to us young clergy about his constant living with depression – 'in the depths of winter when the nights are at their longest and the earth appears

to have given up on life, there under the soil the first shoots of spring are already sending their roots downwards in preparation for the onset of spring.' So in the midst of these dark days I am on the look out for the first signs of spring in the flight of the kingfisher, in the radiance of the snowdrop and in the bird song which is beginning to become more vocal.

Lent comes early this year and as many of you will know the word literally meant 'spring.'

It is therefore a time when as Christians we might be on the look out for signs of new life and new purpose in our own life of faith as well as in the life of our Christian communities. To help you do that, the Diocese has prepared a course entitled 'Fit for Purpose.' It is an invitation to explore afresh the purpose of God's church. What is our future and how can we live and worship in a way that can effectively live out the gospel in our various communities? Something to look forward to as the dark days of winter give way to the promise of new life that comes with the spring.

*Peter Taunton*

## recycle NEW small electrical recycling collection Bath & North East Somerset Council

Have you got any small electrical items that are broken or you no longer want? Starting 18th February if you live in Bath and North East Somerset, you can start recycling them from home as part of our weekly green box recycling collection service.



These items must be able to fit in an average size plastic carrier bag and will be collected as part of our weekly green box recycling collection service.

We will collect any small electrical item that has a plug or uses batteries. Suitable items for collection include:

Bedside lamps (please remove light bulbs and shades), blenders, kettles,

calculators, cameras, chargers, digi-boxes, electronic toothbrushes, electronic toys and games, hair straighteners, hi-fi equipment, irons, power tools, remote controls, shavers, telephones, toasters, torches & so on!

All the items we collect will be crushed, separated into their different materials and recycled to make new products. It is a waste to throw these electrical items away because they can be recycled and made into new things using their valuable metals and plastics - one clothes iron can provide enough steel to make 13 new steel cans.

Find out more [www.bathnes.gov.uk/electricalcollection](http://www.bathnes.gov.uk/electricalcollection)





## Phone security

Mobile phones are a top target for thieves and can also just be lost. Some phones have tracking devices which can be useful so long as they are activated. A good idea is to make sure you know your phone's unique serial number (IMEI) which can be found by inputting \*#06# on your phone. Make a note of this number or better still register your phone on the Immobilise database – a free service – which is used by the police to identify the owners of recovered lost and stolen property. The website is [www.immobilise.com](http://www.immobilise.com). Registration is simple and free, and you can register any other items as well – for example bikes, computers, luggage while travelling, MP3 players, SatNav, jewellery – in fact virtually anything of value to you and a thief. Remember it can also help to return lost property. If you are interested in joining Pensford Neighbourhood Watch – it is completely free – Please contact Chris James on 01761 490392.

## Arthritis Research UK

**Spring Quiz:** Night at Cameley Lodge. Friday, 8th March, 7.00pm for 7.30pm start. Tickets - £16 for a team of four people and £9.00 per head for one of Cameley Lodge's delicious hot suppers. Please contact Bridget Gracey as soon as possible at [tbgracey@btinternet.com](mailto:tbgracey@btinternet.com) or tel: 01275 472639.

**Book Sale:** 9.00am – 5.00pm Friday 15th & Saturday 16th March; 9.00am – 3.00pm Sunday, 17th March at New Manor Farm. We have a wide selection of books and puzzles for long summer evenings in the garden!

**Silver Band Concert:** On 11th May a concert by the Midsomer Norton and Radstock Silver Band.



## Pensford with Publow W.I

Our final meeting of 2012 was a talk from a member of the Julian House Trust. This organisation is based in Manvers Street, Bath and provides accommodation for homeless people. This can be done on a nightly basis of longer for a small fee. A very interesting and enlightening talk. Members had knitted hats and scarves and presented them to this project. Some members attended the Federation Carol Service held in Bath.

After the usual business was completed the evening ended with an 'American Supper' which was thoroughly enjoyed by all.

Sylvia welcomed members to the January meeting which was well attended despite the cold evening. Correspondence and the usual business was considered. There will be a Group meeting in Stanton Drew in March - details will be available later.

We had a hands-on activity with Jackie Dando making felt brooches. This proved to be an interesting activity enjoyed by all, though some of us had pricked fingers whilst using the needles.

The next meeting, on Monday 11th February, will be a talk on German Counterfeits of British Currency during WWII. Visitors always welcome.

## Mummers Play

Despite a rather damp night, the Mummers dancers and players put on yet another excellent show. Thank you to all who supported the evening and gave generously. The £120 which was raised has been donated to Pensford Church Rooms.



**ALIDE HIRE SERVICES**  
01225 331669  
[www.alidehire.co.uk](http://www.alidehire.co.uk)

## Music at All Saints

2012 has been busy for the choir and music. We started the Christian year with an Advent Carol Service. This was sung by the Ammonites' Singers and our choir. This went really well and was enjoyed by all and helped launch the Christmas Season. We continued to work hard for the annual Festival of Lessons and Carols under the direction of David Brunskill. This we were challenged with a few new additions to our repertoire including a composition by Taverner - Today the Virgin. Our smaller choir continued on and sung at Midnight Mass where we tackled Rutter's Nativity Carol. Our next big venture was for Easter. We asked a few singers to join us and we learnt another piece by Rutter - This is the day. This was composed for the Royal Wedding in 2011. We didn't stop there, we celebrated the Rev'd Sue Stevens' ministry with us at her retirement service by singing Rutter's Clare Benediction. Although our next big event wasn't until September, we continued to sing regularly at Sunday services singing anthems old and new. September saw a visit to Compton Dando for a visitation by the Bishop of Taunton. Here All Saints' choir with others from around the area learnt and sung very well O How Amiable by R Vaughan Williams. At this service we were also joined by John Lowe (from Keynsham) who supported me by accompanying the service, to whom I am very grateful. We ended 2012 with a tremendous concert sung by a Norwegian choir. This made a great start to our Christmas festivities. We then returned to our annual Carol Service, this year we looked back at

pieces we sung at previous Christmas services. This Christmas was concluded musically at Midnight Mass where we sung superbly, including another Rutter piece called Christmas Lullaby. This was a magnificent end to what has seemed to be a busy year.

2012 also saw the sad passing of John Merchant. John was a member of All Saints' and a well respected organist with years of experience. All Saints' was honoured to pay tribute to John in a Requiem Mass musically lead by Malcolm Archer. All Saints will remember John for his long service here and thanks him for his ministry.

Looking forward to 2013, this seems to continue to be a busy year. There are plans to celebrate Easter with another amplified choir. Then to mark the occasion of Canon John's 50th anniversary of his ordination we plan to invite the benefice choir again.

I would like to thank all those who support music at All Saints including all the dedicated members of the choir and those who support special occasions. I would like also note my appreciation of Will Stevens, from St John's Keynsham, who came down and sung spectacularly solos and support me in singing. Music I find lifts a service and listeners' spirits and I hope we will continue to develop and grow both in number and in heart. I always welcome new members to the choir, so if you want to be a part of this vital ministry, then come along to a choir practice on most Saturday at 5:30pm. Thanks to all and best wishes for 2013

Martin Sussams Choirmaster and Organist

**The CHRISTINGLE SERVICE** on Christmas Eve afternoon was a great success, with many families attending and lots of excited children taking part in the creation of the crib scene.

The Brownies also contributed with readings and prayers. The sum of

£202 collected at this service has been forwarded to The Children's Society for their on-going work with excluded and abused children.

Thank you to everyone who contributed. Judith Hillman, Hon Local Secretary 490324



Our first meeting of 2013 was very pleasant in spite of it being grey and damp outside.

The statement of accounts, so well prepared again by Sylvia, was discussed as was the programme for the year ahead. We look forward to some interesting afternoons. Many of our members very much enjoyed the music and choir at the lovely Christmas services, also our Christmas meal together and then the Benefice lunch, which again was delicious Christmas fayre. A huge thank you to everyone who worked so hard in whatever capacity for that greatly appreciated occasion.

We are delighted to have a new member at the start of the New Year and we welcome Janet Smith. We would love to have more of you come along on the second Thursday of the month at 2.15pm in the Church Rooms. A Very Happy New Year to you all. Mary Thomas

**The United Benefice of Publow with Pensford Compton Dando and Chelwood ELECTORAL ROLLS**

As many of you will already know, 2013 is a year in which the Electoral Rolls of our churches are required by law to be completely renewed. This means that the old Rolls are destroyed and anyone wishing to be on the new Electoral Roll MUST complete the appropriate form by 24th March, 2013. Being on the Electoral Roll entitles you to vote for your Church Officers and take part in the Annual Parochial Church Meeting. Letters have been sent to everyone on the old Rolls and also to a number of other people, inviting them to complete the Application Form. If you have not been contacted and would like your name on the Roll, please speak to Judith Hillman, 01761 490324 for All Saints' Roll or Sylvia Brunskill, 01761 490449 for St. Mary's and St. Leonard's



**PENSFORD TENNIS CLUB**

Unfortunately bad weather into 2013 forced the cancellation of the Club's first Quick Tournament of the year. However further tournaments are in the pipeline and details of these will be put on our website shortly. Our Mixed Winter League team's next encounter is on 20th January so fingers crossed and hope that our side wins! Thanks to our investment in floodlights we are able to continue our adult coaching and Club play on Tuesday evenings. Coaching starts at 7.15pm for an hour (£5 per session) followed by Club play. Club play is also on Sundays 11.00am - 1.00pm. For more details about coaching contact Peter Evans on 07580 004963 p.evans@efot.co.uk and also check out our website [www.pensfordtennisclub.co.uk](http://www.pensfordtennisclub.co.uk). On the social side plans are afoot to run another Quiz Night in the village hall so watch this place!

**Everyone is invited to a**  
**Beetle Drive**  
**Friday 8th February**  
**6.00pm**  
**in Compton Dando Parish Hall**  
**50p entry**  
**Fun for everyone, from 4 to 104**  
**Ideally you need a partner**  
**with whom to play**  
**but we can pair you up**  
**Organised by the Compton Dando 5 Villages Youth Group**



**Chew Valley Wildlife Group**  
**BEES and BEE-KEEPING**

On Thursday 28th February by bee-keeper David Maslen in the Chew Magna Millennium Hall, 7.45pm. £2.50 incl refreshments. David served as a DEFRA bee inspector for nearly 20 years, gives courses on bee-keeping and manages a large number of bee colonies. There are about 20,000 different species of bees in the world. In each colony there are three types of bee: the queen bee, the worker bee and the drone. The worker bee and the queen bee are both female, but only the queen bee can reproduce. Worker bees clean the hive, collecting pollen and nectar to feed the colony and they take care of the offspring. Come and hear more about this fascinating and vital insect.



**Chew Valley Gardening Society**

At our first meeting this year we welcomed new members as well as John Tucker from Prior Park Garden Centre. A thoroughly enjoyable evening was enlivened by the scent of some of the beautiful winter- flowering plants John brought with him and he spoke knowledgeably about how to choose garden tools which not only do the job effectively but also suit us and the way we like to work. Members shared ideas and experiences of specific tools and much discussion took place about the merits of different kinds of the same tool. We also learnt what a 'shwoe' is and how useful it can be! Our next meeting will be in the Old School Room, Chew Magna on 14th February at 8.00pm and the competition will be "3 Snowdrops".



Chew Valley U3A meeting on 18th February will hear Tim Lewis and Sheila Furneaux in concert. Their entertainment will be entitled, "Glorious Mud". At the meeting on 18th March, Gina Merrett-Smith will speak about "Marianne North, Remarkable Victorian Floral Artist". A year's membership is just £8.00. For more information visit the national, [www.u3a.org.uk](http://www.u3a.org.uk) or local, [chewvalleyu3a.org](http://chewvalleyu3a.org). uk websites or phone the Secretary, Christine Evans, on 01934 832841.



**Pensford Brownies** would welcome any girls between the ages of 7 years and 11 years to join them at their Brownie meetings on Wednesdays between 6.30pm and 7.45pm. We meet at Pensford Memorial Hall for fun and games. Please come along for an evening to see if it is something which you would enjoy. Should you need any further information you can contact Brown Owl (Debbie) telephone number 01275 333091. We look forward to welcoming you to our Pack.

*Compton Dando Community Association*  
**Thursday 14th February**  
**Coffee and Chat The Parish Hall**  
**10.30am - 12.30pm**  
**Come and join us for complimentary coffee/tea and cakes**  
**Bring your family and friends**  
**A chance to meet up and spend some time getting to know each other**  
**Contact Alice 490800**



## Minutes of a meeting held in December

**Hinton Organics Site & Surrounding Lanes:** Complaints were lodged with Highways regarding the road condition. The height of the debris on site is questioned. It was noted that lorries were travelling up and down Woollard Hill creating a mess and eroding the already suffering hedgerows. This was to be followed up with the truck operators and Highways.

**Parking Notice – Hillcrest:** The fake Parking Notice placed on a car at Hillcrest was forwarded to the Police and a copy kept for Parish Council files. No other problems have been reported to date.

**Back Lane:** Cars parking on the lane were reported to the Police and is being monitored. Tickets will be issued if necessary.

**Hursley Hill:** The Environmental Officer is very aware of the Noise nuisance being caused by the motorbike scramblers on a weekend and is in hand. Noise recording equipment will shortly be installed at one of the complainants properties to record the nuisance. Planning Enforcement have been contacted and if the land is used more than fourteen times in a year for this type of use then planning will be required.

**Affordable Housing:** A further meeting has taken place with Curo who proposed 30 homes of which 8 are proposed for private sale. A letter will be drafted by Curo and agreed by the Chairman on behalf of the Parish Council prior to circulation to all residents. A Public Consultation will follow.

**Footpath at Church Farm Publow:** Details have been received from Colin Hudson regarding a Modification Order. This will be progressed.

**Local Development Framework:** Parish Council members attended the LDF briefing. The Local Development Framework has been put in place to take the Core Strategy back to the beginning to discuss numbers of houses and timing. A Place making Plan briefing will take place in February to identify where the proposed housing will be to form part of the Core Strategy. North Somerset and Bristol have had their Core Strategy's approved.

**Priestdown:** Highways Department have been contacted raising concerns about the amount of soil continuing to fall on top of the stone Gabions at Priestdown. Highways were also reminded about the guttering/pipe which is displacing water onto the road.

Pavement from Nursery Corner to the Village was reported to be very overgrown again by overhanging vegetation. This was reported to highways.

**Pensford Bridge:** Concerns remain regarding possible movement in the bridge. Structures department at B&NES were to be informed.

**Planning/Enforcement:** Log Cabin Woollard: The question of why the residents in the Log Cabin are getting refuse and recycling collected if they do not have the permissions for the Log Cabin to be there and also are they paying Council Tax was raised with Compton Dando Parish Council. The Clerk has replied saying that "It was felt by Councillors, that this request should have been made to BANES Enforcement. I have no further updates to provide on this matter, but I will update you if that changes."

**Milestone Bungalow:** A follow up email has been sent to Mr Allard asking if a site visit has been made to this address following the erection of a Garage and the removal of the wall in between the property and the neighbouring lay by. No reply to date.

**Planning Outcomes:** Appeal Decision Notice: Land South of Orchard View Sleep lane Whitchurch. Residential development comprising of 47 dwellings with associated car parking, access, landscaping and public open space. Appeal is allowed.

12/04473/FUL Mr & Mrs Sivier Woodcroft Barn Woollard Lane Publow/ Use of residential annexe as a separate residential dwelling. Permitted.

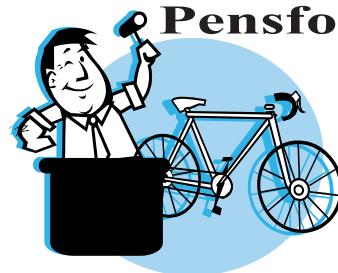
**Date of next meeting Monday 11th February.**

# AUCTION OF PROMISES

Friday 8th March

7.30pm

Pensford Memorial Hall



## Can you help?

Dear All – Are you able to contribute an item or artefact that you no longer use (£20 + in value) or offer your expertise/ services in an Auction of Promises

The more unusual the better, but a typical few are as follows –

A tour of a place you know : Hampers : A music lesson : Sport coaching  
Computing help : Introduction to a foreign language  
Holiday accommodation : Original painting : Babysitting : Hairdressing  
Art lesson : Logs for fire : Meal for two/four : Fresh flowers/vegetables

**Tickets to the auction £5 each to include a glass of wine and light bites**

Offers/promises for the auction and/or tickets  
Please contact : Richard and Jenny Davis 01761 490727

Proceeds to St. Mary's Church – Compton Dando

Saturday 2nd February  
Church Rooms, Pensford  
10.00am – 11.30am

**Coffee Morning & Market**

for  
**P u b l o w  
C h u r c h**

**Home Baking**

**New Season MARMALADE**

**Bring and Buy Stall**

**BOOKS**

Proceeds towards Church Funds  
Admission 50p to include coffee and biscuit

# February 2013

- |            |           |   |
|------------|-----------|---|
| Sat        | 2         | Coffee Morning & Market Church Room 10.00am – 11.30am   |
| Mon        | 4         | Mothers' Union Wave of Prayer Meeting<br>St. Francis Church Keynsham 10.00am – 12noon<br>Pensford Hitory Society Pavilion Room 7.30pm |
| Wed        | 6         | Mobil Library   |
| Fri        | 8         | Beetle Drive. Compton Dando Parish Hall 6.00pm      |
| Mon        | 11        | W.I. Pensford Memorial Hall 7.30pm<br>Publow with Pensford PC Meetings<br>Pavillion Room of the Memorial Hall 7.15pm                  |
| Wed        | 13        | Ash Wednesday Holy Communion & Imposition of Ashes<br>All Saints' 7.00pm  |
| Thur       | 14        | CDCA Coffee & Chat Morning 10.30am<br>Mothers' Union, Church Room 2.15pm<br>Gardening Society Chew Magna Old School Room 8.00pm       |
| Mon        | 18        | U3A Ubley Village Hall 10.30am  |
| Wed        | 20        | Mobil Library   |
| <b>Mon</b> | <b>25</b> | <b>Teatime Madness, Pensford Primary School, 3.30pm - 4.45pm</b>  |
| Thur       | 28        | Chaos Production of Robin Hood Pensford Memorial Hall<br>Wildlife Group Chew Magna Mellennium Hall 7.45pm                             |
| Fri        | 1         | Chaos Production of Robin Hood Pensford Memorial Hall<br>Women's World Day of Prayer Keynsham Baptist Church 1.45pm                   |
| Sat        | 2         | Chaos Production of Robin Hood Pensford Memorial Hall<br>Coffee Morning & Market Church Room 10.00am – 11.30am                        |
| Wed        | 6         | Mobil Library<br>Pensford Memorial Hall AGM 7.30pm  |
| Fri        | 8         | Auction of Promise Pensford Memorial Hall 7.30pm<br>Arthritis Research UK Quiz Cameley Lodge 7.00pm                                   |
| Sat        | 9         | Bavarian Evening Pensford Memorial Hall 8.00pm  |

## ALIDE HIRE SERVICES

Tool Hire - Diggers & dumpers - Toilet Hire

# 01225 331669

www.alidehire.co.uk

# Bavarian Evening

back by popular demand....

Saturday 9th March  
Pensford Memorial Hall  
8:00 pm start – Late  
£19.50 per ticket  
(including food and drink)



Enjoy an evening full of laughter  
with crowd participation

No need to move from your seat all night  
as you will be served by our  
Bavarian waiters & waitresses



Tickets available from;  
Alan & Debbie Hunt 01761 490409 or  
Jan & Alan Vowles 01761 490753

Please note this is an all seated event  
limited tickets available  
No entry on the door!  
Over 18's only

Proceeds to be split between  
local organisations and St Peters Hospice

Chaos Productions bring you

# ROBIN HOOD

Pensford Memorial Hall

28th February, 1st & 2nd March  
Doors 7.30pm



Tickets from  
Pensford Post Office  
or Alan Ford 490 440  
(Tickets available from mid february)  
"A right old Pantomime"

Copyright of Limelight Scripts